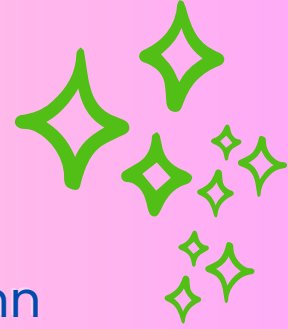




# HRLLS Newsletter



September 2024  
Lysha Thompson & Chrissi Germann

Heartland Library of Eldon  
**READ.CHAT.CREATE**

**AGES 9-12**

**CITY SPIES**  
JAMES FONZI

**WEDNESDAYS**  
SEPT 18 - OCT 30  
3:30 - 4:30 PM

Register here:  
tinyurl.com/4hpx9...

Book Clubs

Heartland Regional Library System

**GATEWAY BOOK CLUB**

**ALL MY RAGE**  
SABAA TAHIR

We will create a Gateway team for Battle of the Books in March 2025. We'll cover 1 book per month to discuss, play games & win prizes!  
**NO registration required!**

**GRADES 9-12**

heartland.lib.mous

Heartland Regional Library System

**SCREEN-FREE BINGO**

Submit to your branch once you've gotten BINGO (five in a row) for a chance to win a prize!

Nature Walk	Go on a scavenger hunt	Pick Flowers	Clean your room	Go Fishing
Have a Picnic	Make dinner together	Plant something	Act Out a Story	Go to the library
Read a book that inspired a movie	Read a new book	Make dessert from library cookbook	Play a Board Game	
Search for bugs or birds	Read a story to a friend	Draw chalk art	Read aloud to your family	Check out a Paint Kit
Play in water	Read by flashlight	Write a letter to mail	Check out a STEAM Kit	Do random act of kindness

**100**

Name: \_\_\_\_\_  
Branch: \_\_\_\_\_

Passive



## In Branch Programming

Do you have **Medicare Questions?**

Our Missouri SHIP Medicare counselors have answers!

Helping you Navigate Medicare



Please attend our free event:  
**Open Enrollment Q&A**

September 23

Belle - 10 AM

Vienna - 1 PM

September 24

Iberia - 1 PM

Eldon - 4 PM

Visit [missouriship.org](http://missouriship.org) or call 800-380-3330 for FREE help. We do not sell insurance plans.

**MISSOURI SHIP**  
State Health Insurance Assistance Program

**SHIP**  
State Health Insurance Program

**DCI**  
Division of Community Care

This material has been created or produced by Missouri SHIP with financial assistance, in whole or in part, through a grant from the Administration for Community Living. Funding is administered through the Missouri Department of Commerce & Insurance and services is provided by Missouri Connections for Health, a nonprofit organization.

**SHOW-ME Story Time & craft**  
Children 0-9

**ACORN WAS A LITTLE WILD**

Belle 9/9 @ 10 am  
Eldon 9/26 @ 4 pm  
Iberia 9/19 @ 4 pm  
Vienna 9/16 @ 10 am

An adventurous acorn with a wild side sets out to see the world. Each experience brings him closer to growing up and the most amazing adventure of all.

**SEPTEMBER CRAFTING**

REGISTRATION REQUIRED

OR REGISTER AT  
[HTTPS://TINYURL.COM/4NUW65N](https://tinyurl.com/4NUW65N)

VIENNA 9/12 @ 10 AM  
BELLE 9/9 @ 2 PM  
IBERIA 9/18 @ 12:30 PM  
ELDON 9/11 @ 4 PM